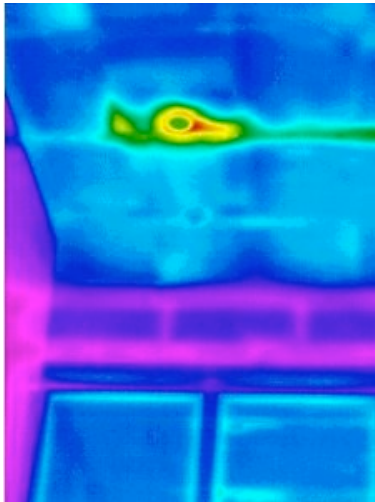


---

# FACT SHEET: INFRA-RED CAMERAS

Our Infra-red cameras are able to show any heat losses through the thermal building envelope even after the lining has been installed.

We use our cameras for building audits of existing houses to identify the level of insulations as well as for commissioning of our own installations. These cameras are powerful quality assurance tools which very quickly pin-points any areas of concern.

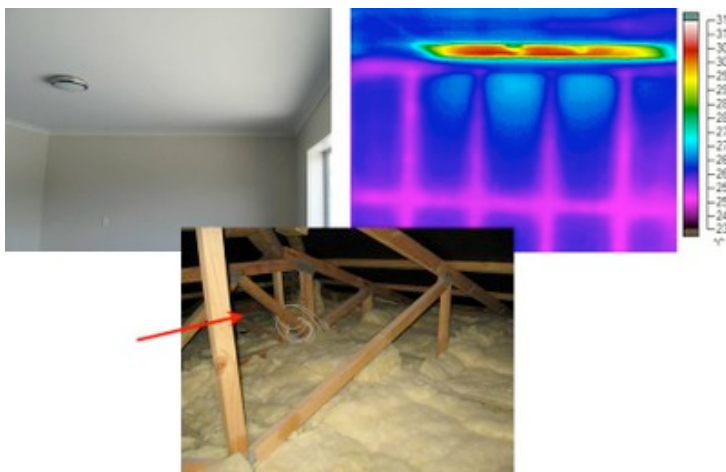


The infra-red image on the left shows the window (bottom part of the image) and ceiling of a recently built house. The insulation installers were not Right House approved. The image shows that the installers failed to fit the insulation tightly against the CA rated downlights. Furthermore they left a clearly visible gap, as shown in the image on the right, between two insulation sections on the right of the downlight.

The home owners subsequently asked Right House to fix the problem.

Our cameras are sensitive enough to also pick up the increased heat losses through the timber framing above the windows (pink areas). This effect is known as "thermal bridging". Our consultants are familiar with a number of building techniques to avoid these unnecessary heatlosses through this thermal bridging.

The following images show another recently built house. The owners had especially specified increased insulation in the ceiling. However, an inspection by a Right House consultant showed three large "hot spots" on the infra-red image of the bedroom ceiling. (The images were taken on a sunny summer afternoon when the roofspace was very warm.)



From the manhole it was difficult to see that the insulation installers had missed three whole sections of ceiling insulation (red arrow). Without the infra-red camera inspection the mistake would probably have gone unnoticed and the home owner would have paid for the installers' carelessness through higher heating bills in winter and increased cooling costs in summer.

